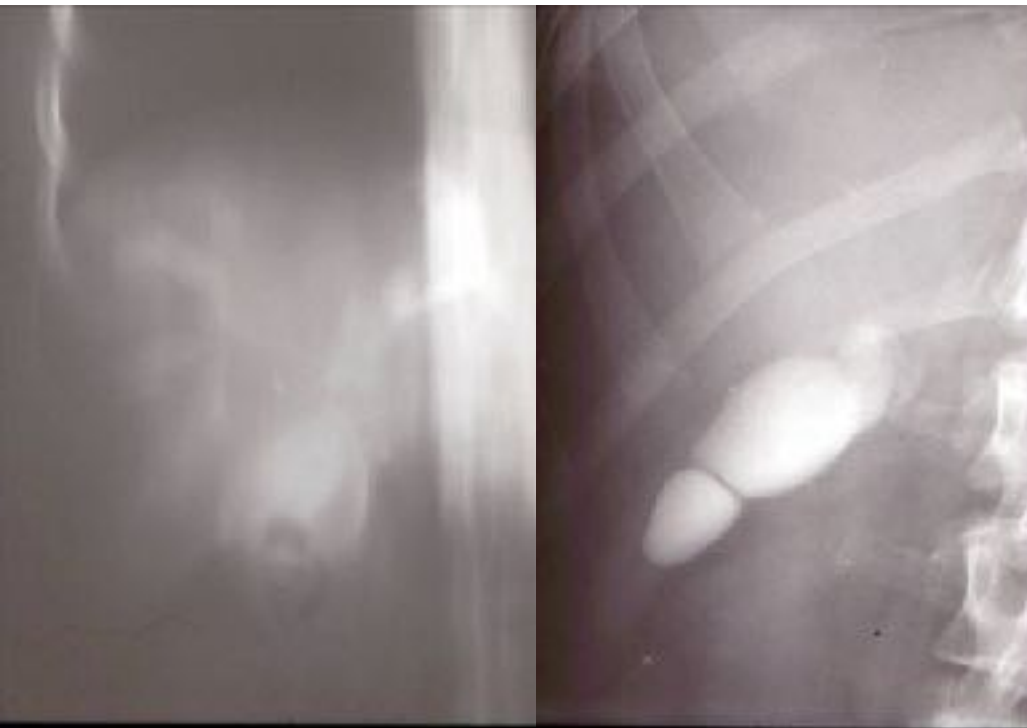




Colangiocarcinoma (Tumor de Klatskin)

I. DIAGNÓSTICO



TC MULTICORTE

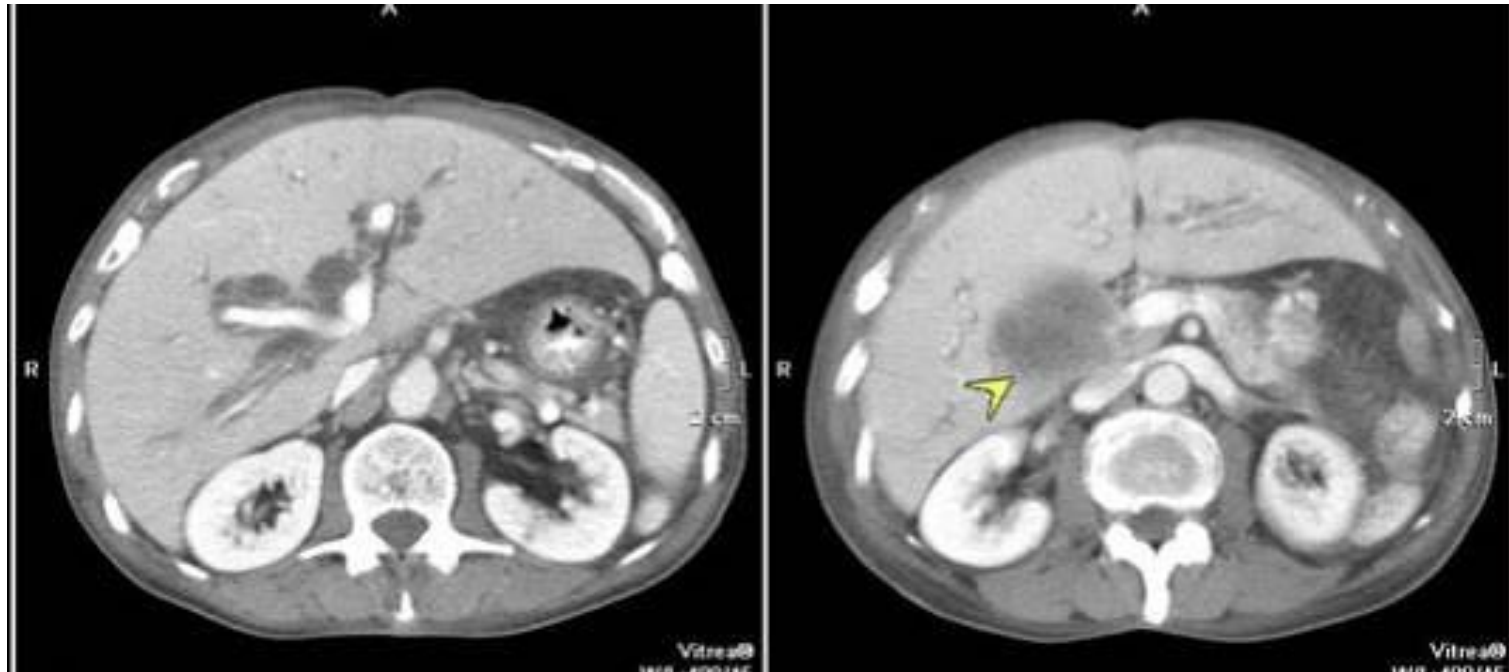
16 – 128 detectores

VENTAJAS

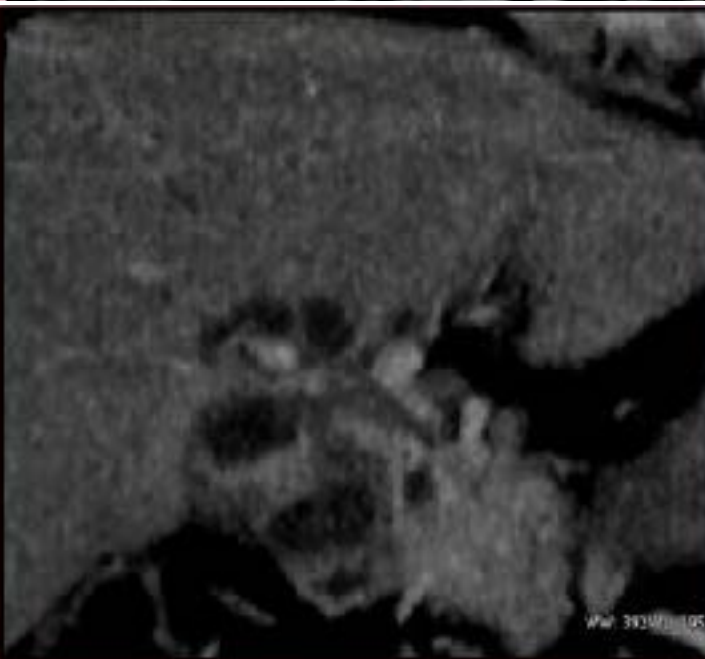
- **Secciones milimétricas (detalle anatómico)**
- **Reconstrucciones ortogonales**
- **MIP (Proyección de Máxima Intensidad)**
- **Reconstrucciones 3D**

INCONVENIENTES

- **Radiación ionizante**
- **Reacciones al contraste I.V.**



- Secciones milimétricas
- MIP



- **Proyección coronal**
- **MIP**

RESONANCIA MAGNÉTICA

1 – 3 Teslas

VENTAJAS

- **Ausencia de radiación ionizante**
- **Secciones oblicuas**
- **Imágenes colangiográficas**
- **Reconstrucciones 3D**

INCONVENIENTES

- **Artefactos (movimiento, pulsación, metal,...)**
- **Claustrofobia**
- **Mala definición del área periampular**

RESONANCIA MAGNÉTICA

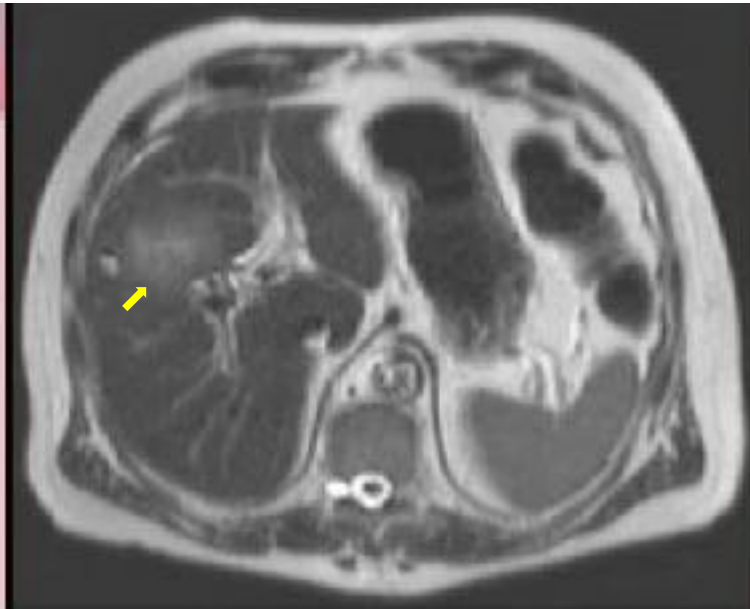
TÉCNICA

Secuencias T2: líquidos estáticos (bilis)

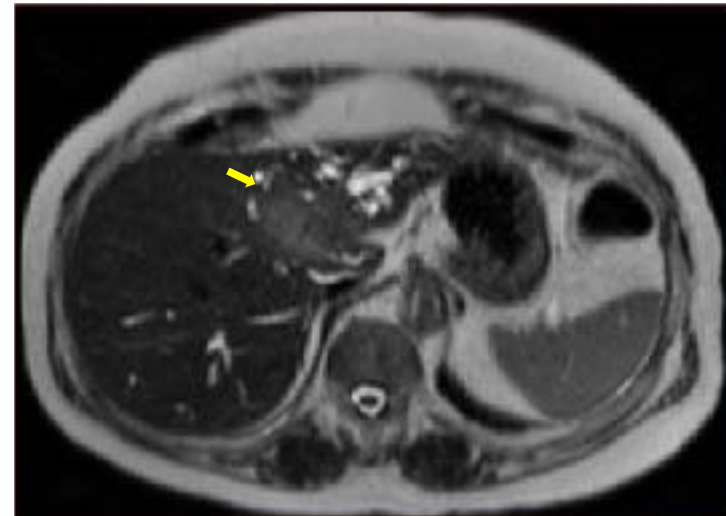
Secuencias T1: hígado y órganos vecinos

ColangioRM: Vía biliar

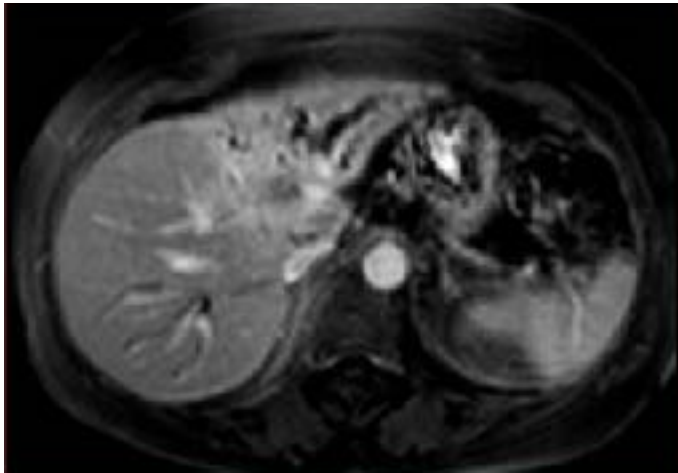
Secuencias con contraste I.V. (T2).



T2: Masa intrahepática



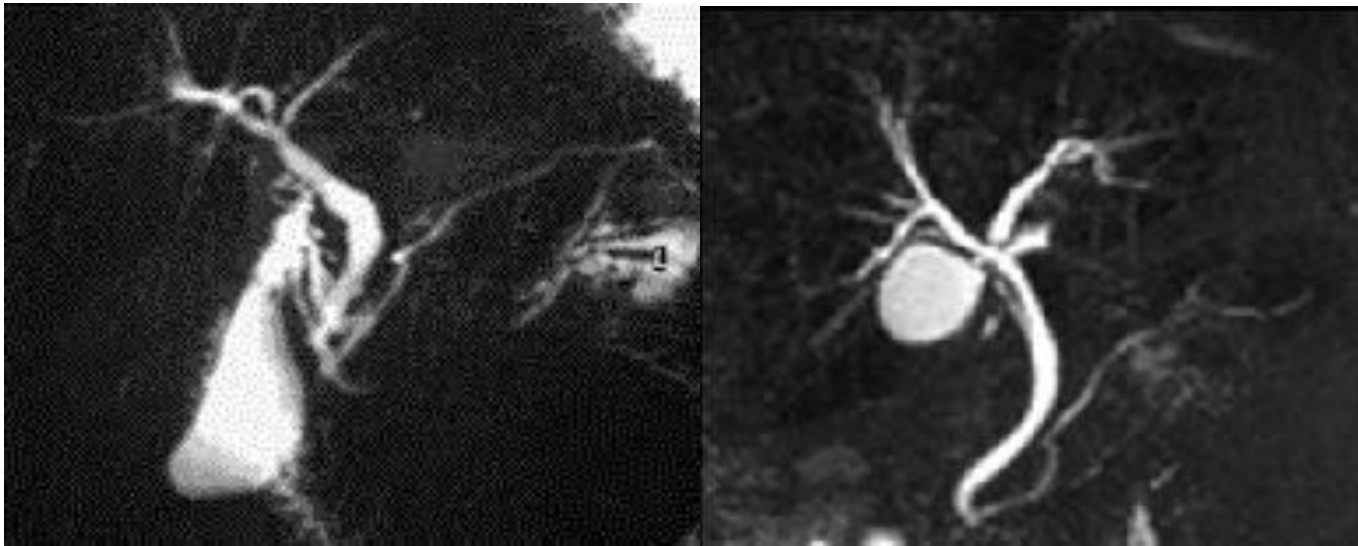
T2: Masa hilar



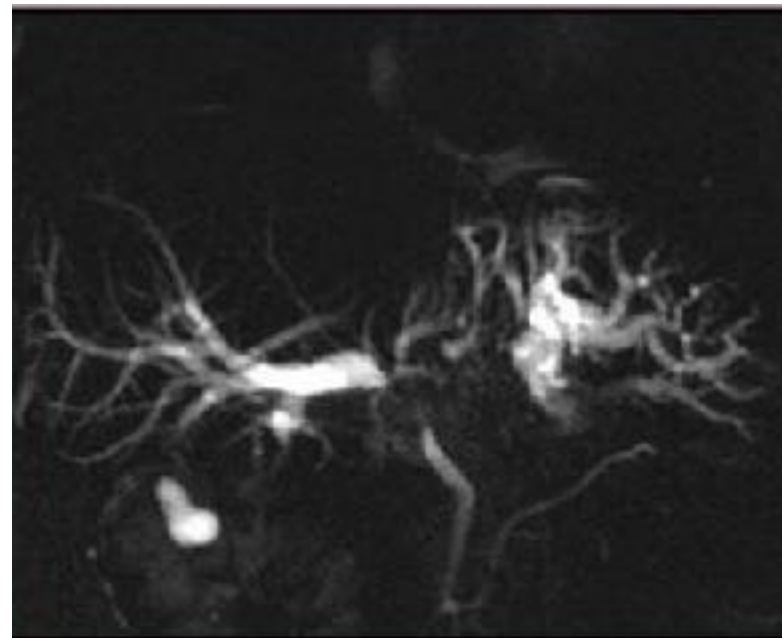
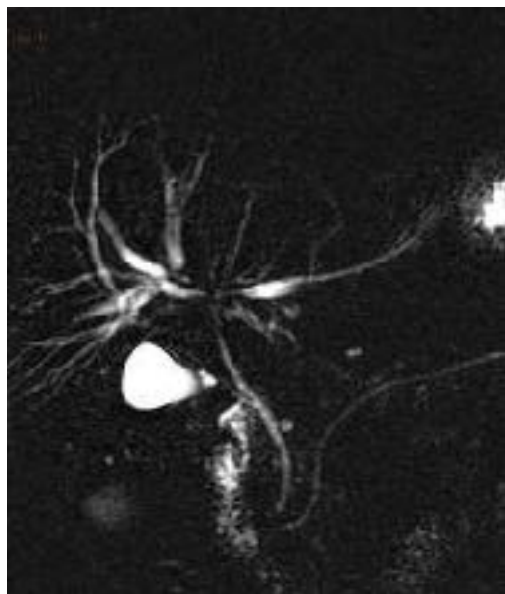
T2: contraste I.V.



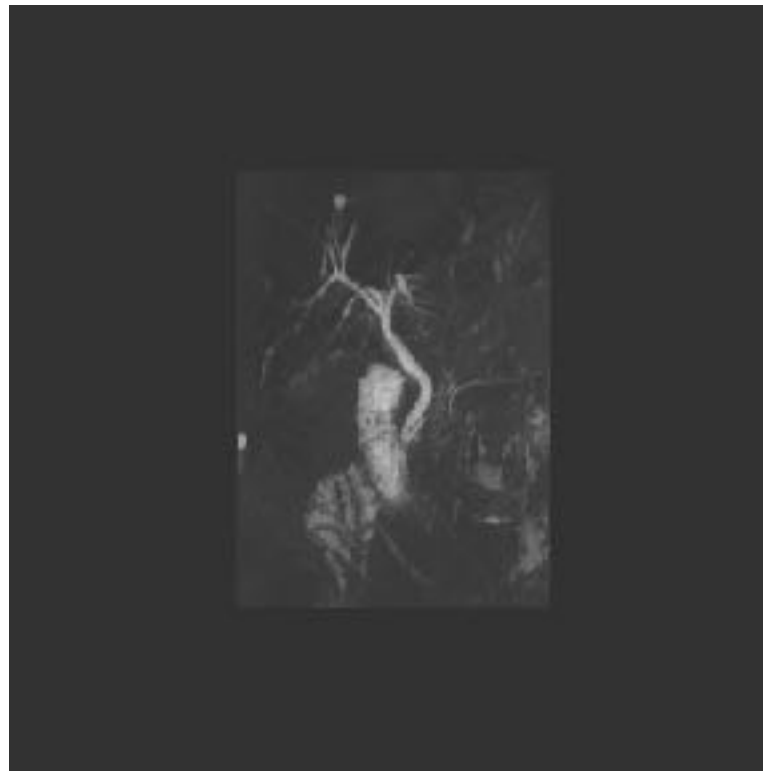
**T2: contraste I.V.
secuencia tardía**



ColangioRM (T2)



ColangioRM (T2)



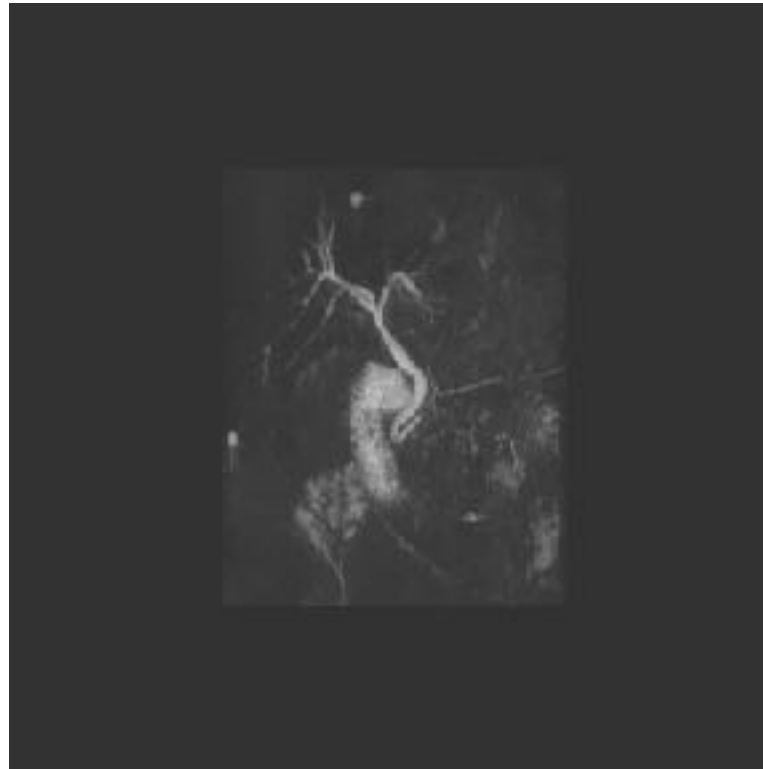
ColangioRM 3D



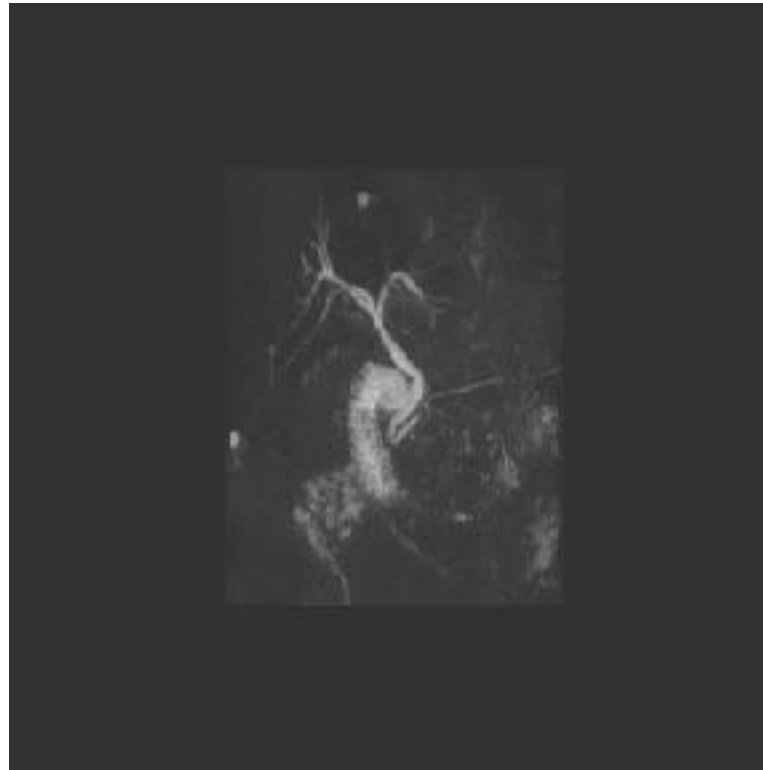
ColangioRM 3D



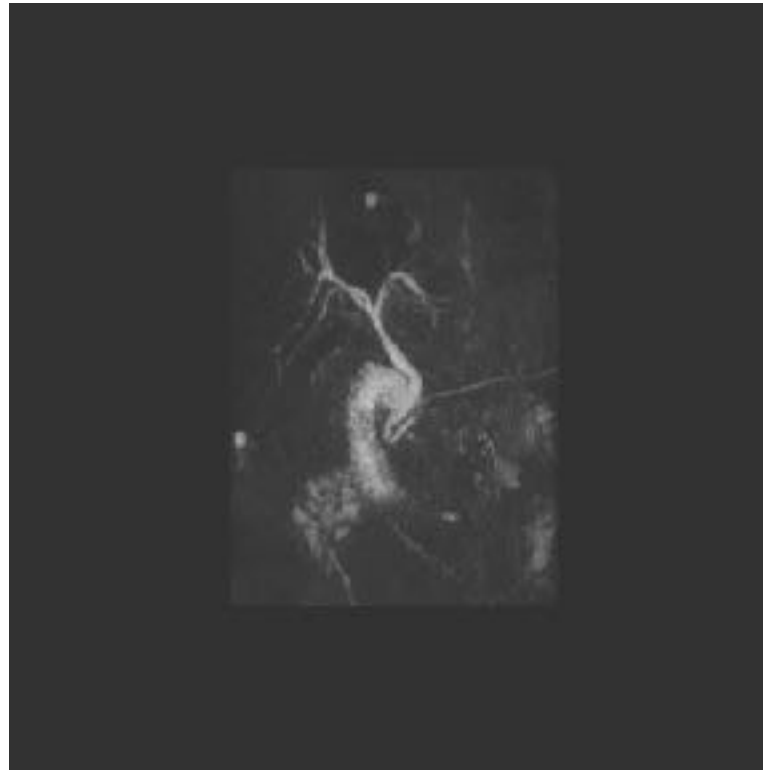
ColangioRM 3D



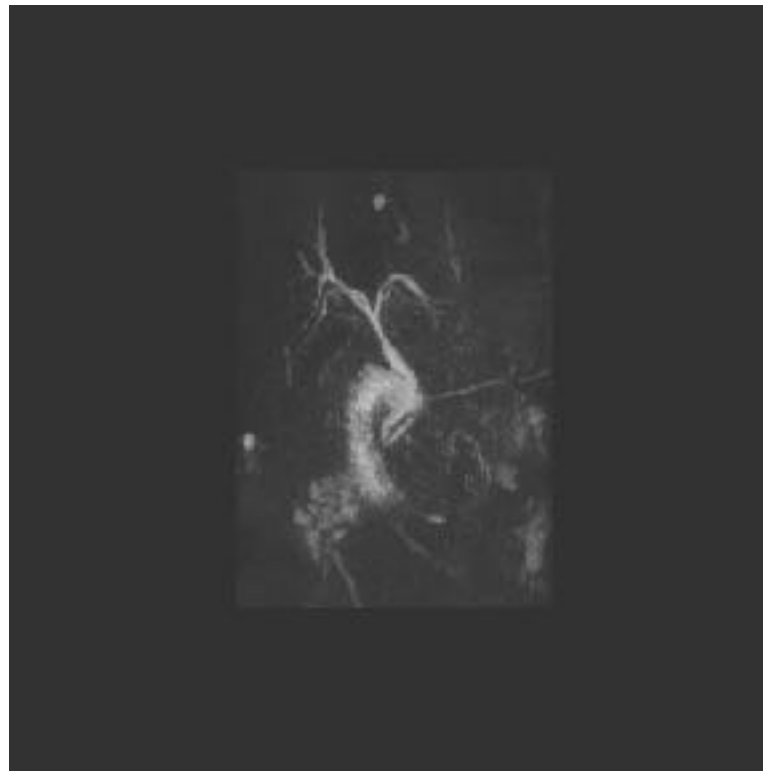
ColangioRM 3D



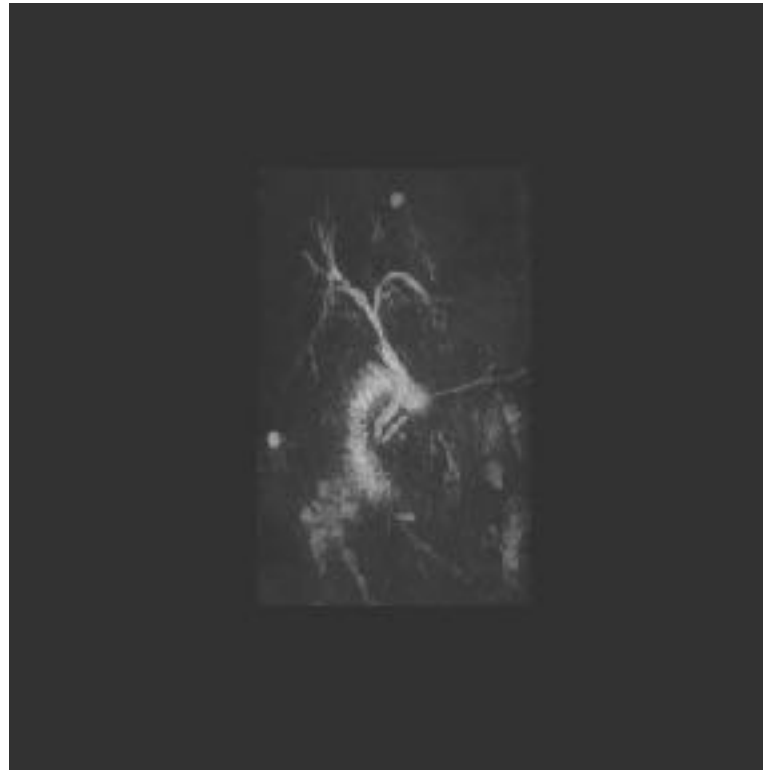
ColangioRM 3D



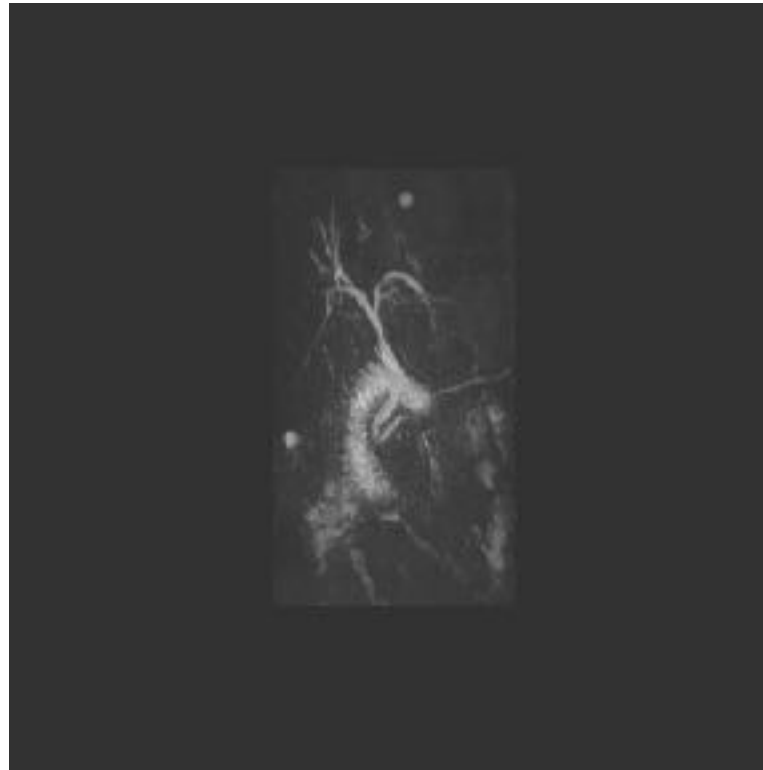
ColangioRM 3D



ColangioRM 3D



ColangioRM 3D



ColangioRM 3D



ColangioRM 3D



ColangioRM 3D



ColangioRM 3D



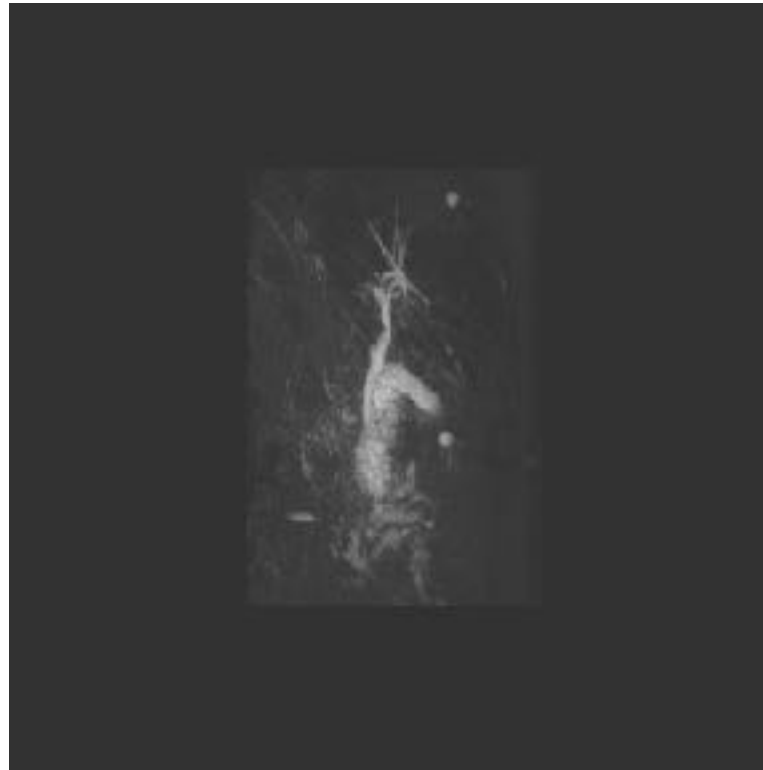
ColangioRM 3D



ColangioRM 3D



ColangioRM 3D



ColangioRM 3D



ColangioRM 3D



ColangioRM 3D



ColangioRM 3D



ColangioRM 3D



ColangioRM 3D



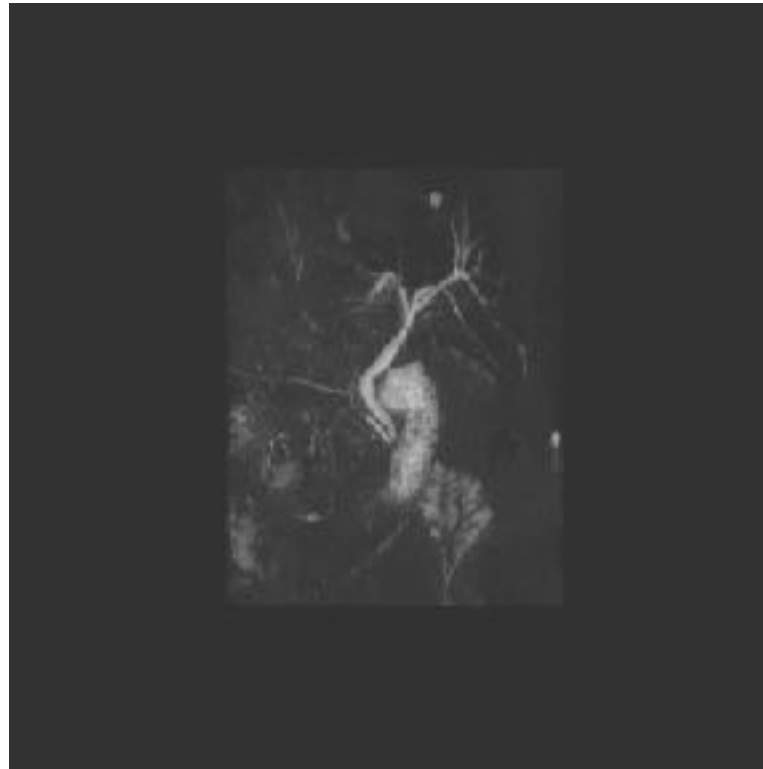
ColangioRM 3D



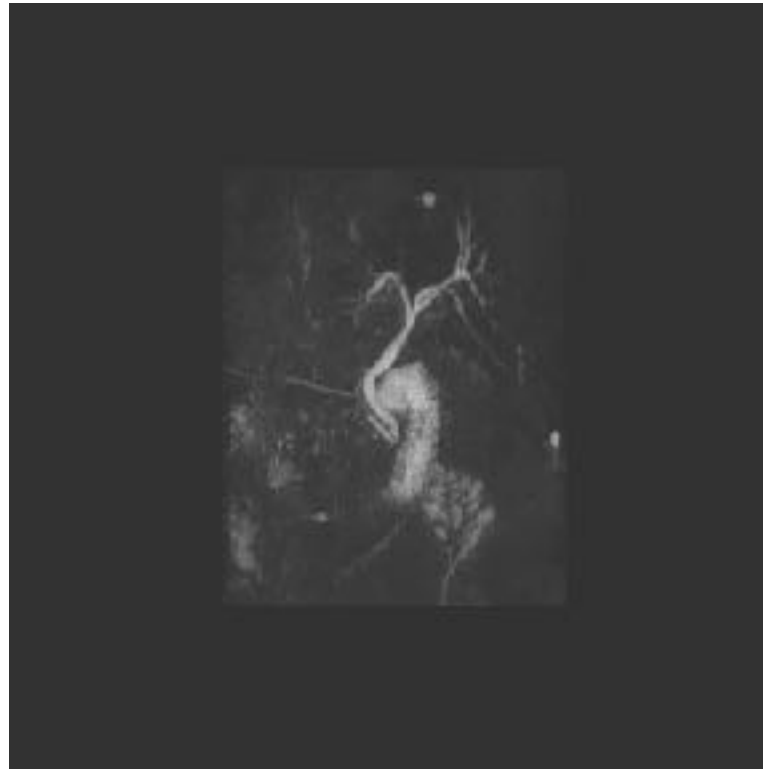
ColangioRM 3D



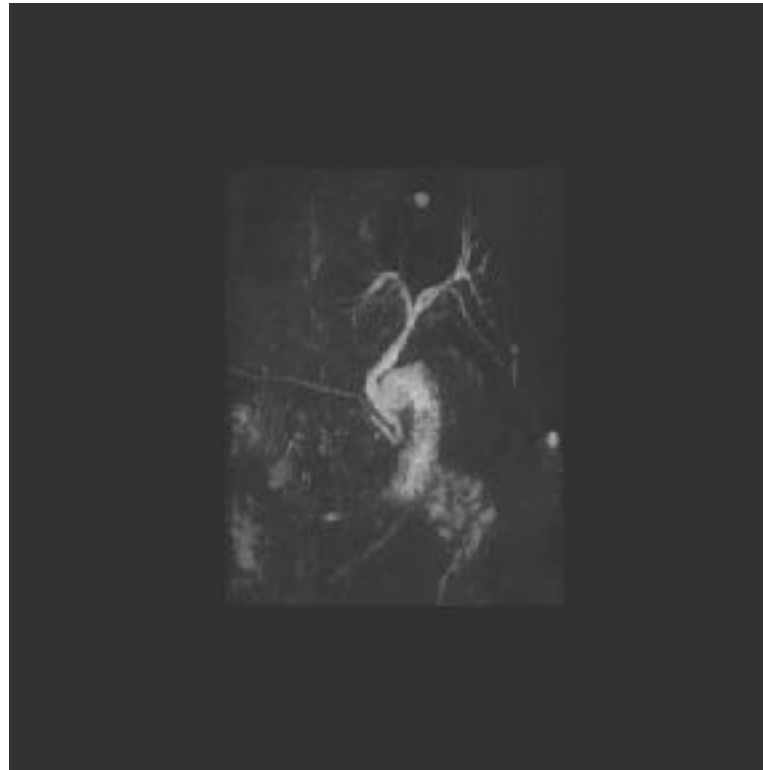
ColangioRM 3D



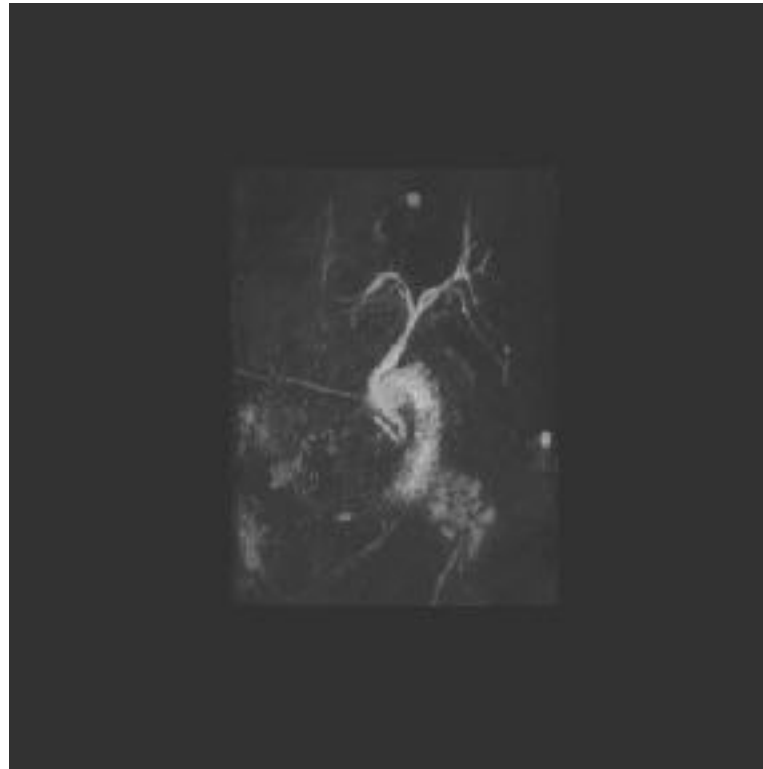
ColangioRM 3D



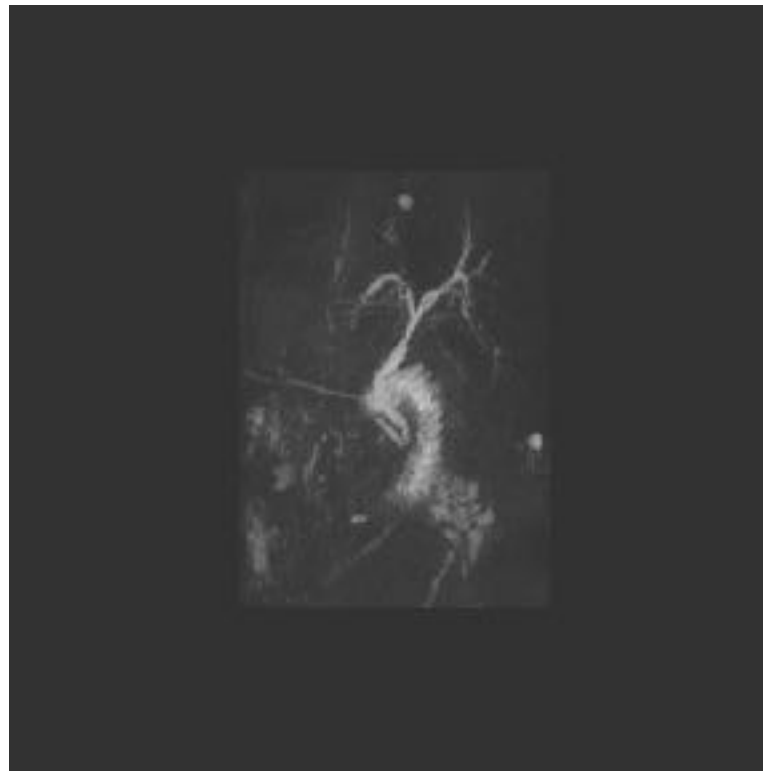
ColangioRM 3D



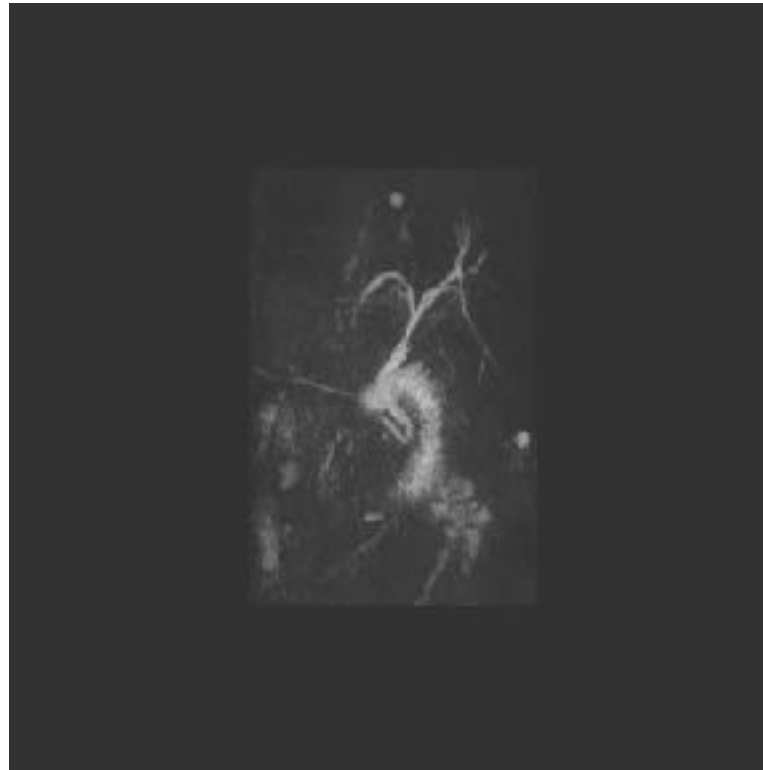
ColangioRM 3D



ColangioRM 3D

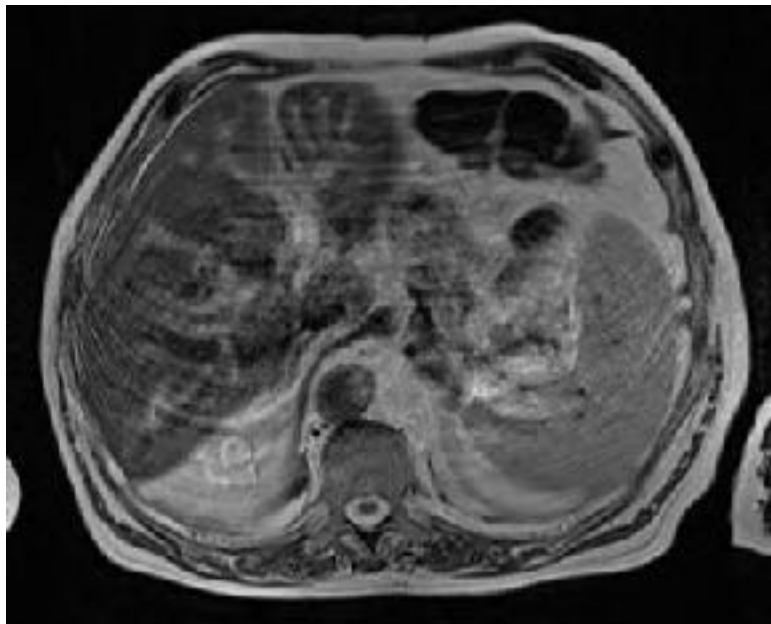


ColangioRM 3D

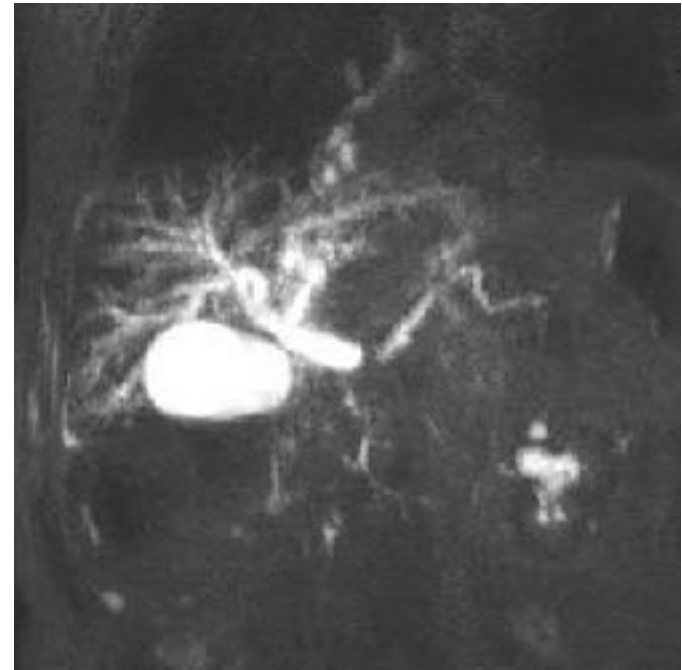


ColangioRM 3D

ARTEFACTOS



T2. Respiración



ColangioRM. Movimiento

OBJETIVOS

DIAGNÓSTICO

- TC - RM
- BAG -PAAF



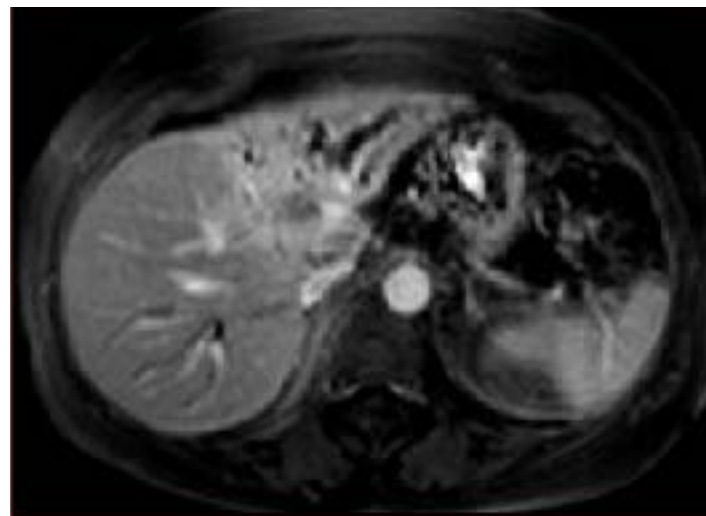
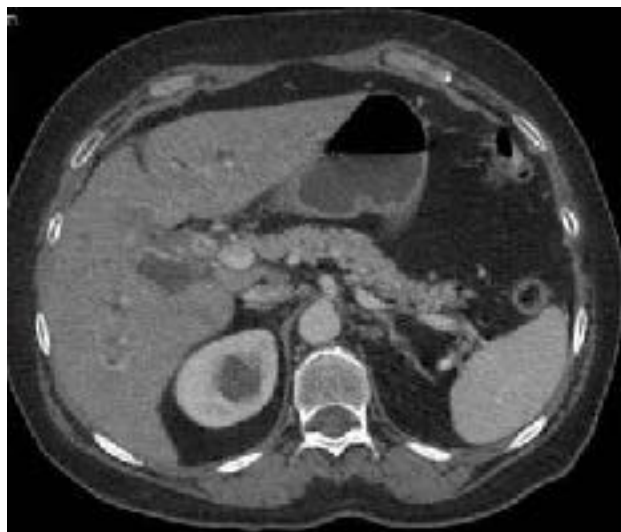
RESECABILIDAD

- **Afectación arterial o portal**
- **Infiltración conductos biliares secundarios**
- **Metástasis hepáticas**
- **Adenopatías**

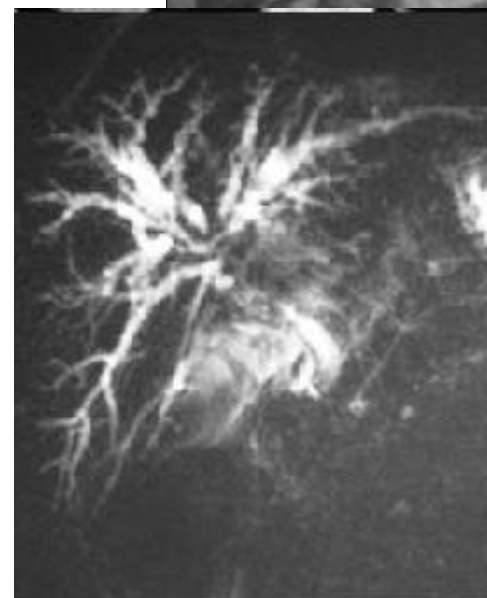
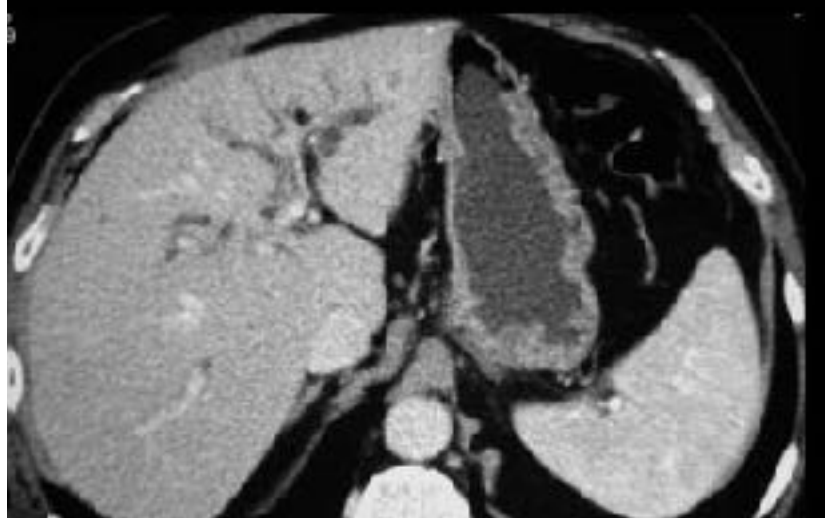
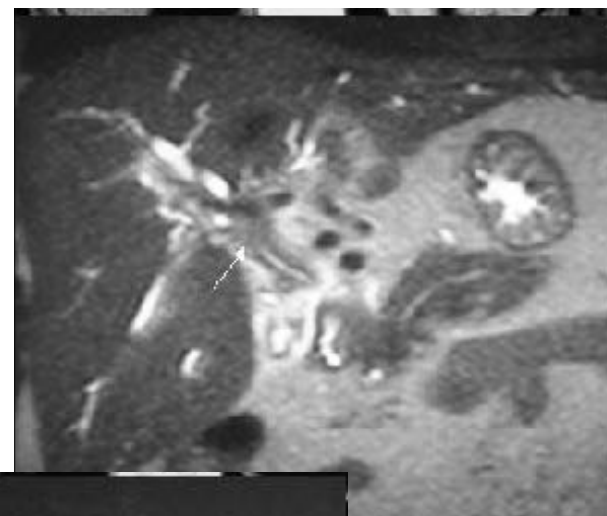
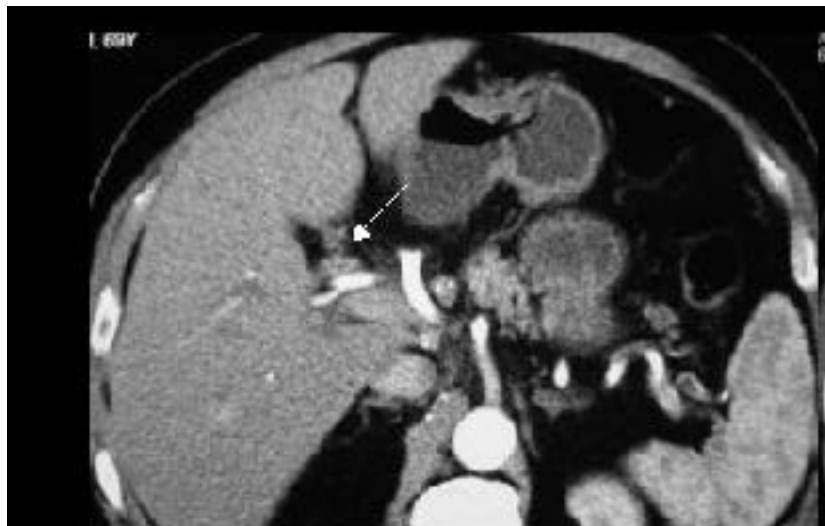
Patrones de crecimiento

- **Exofítico (periférico)**
- **Infiltrativo (tumor de *Klatskin*)**
- **Polipoideo (extrahepático)**
- **Mixto**

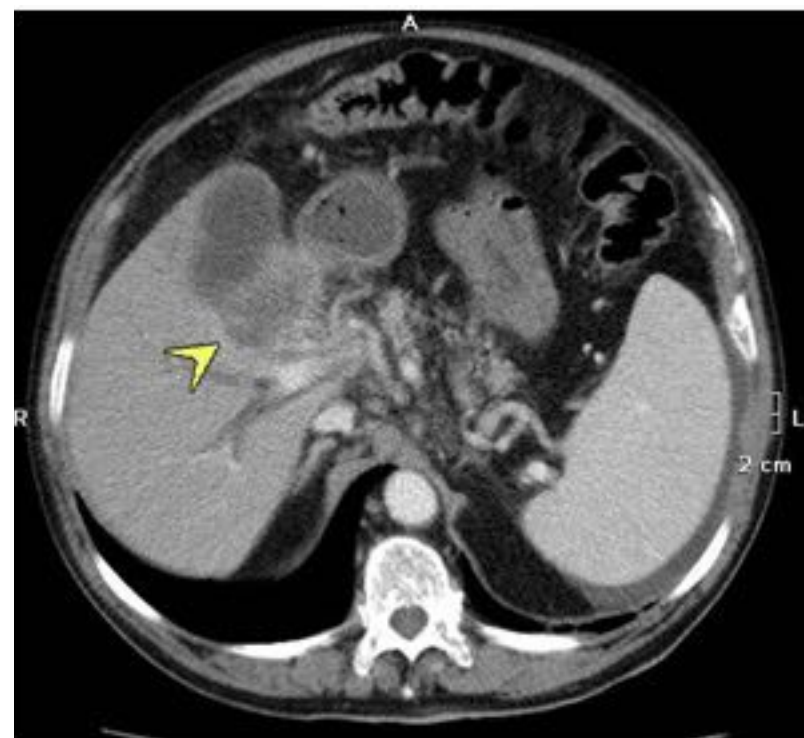
Exofítico (masa)



Infiltrativo



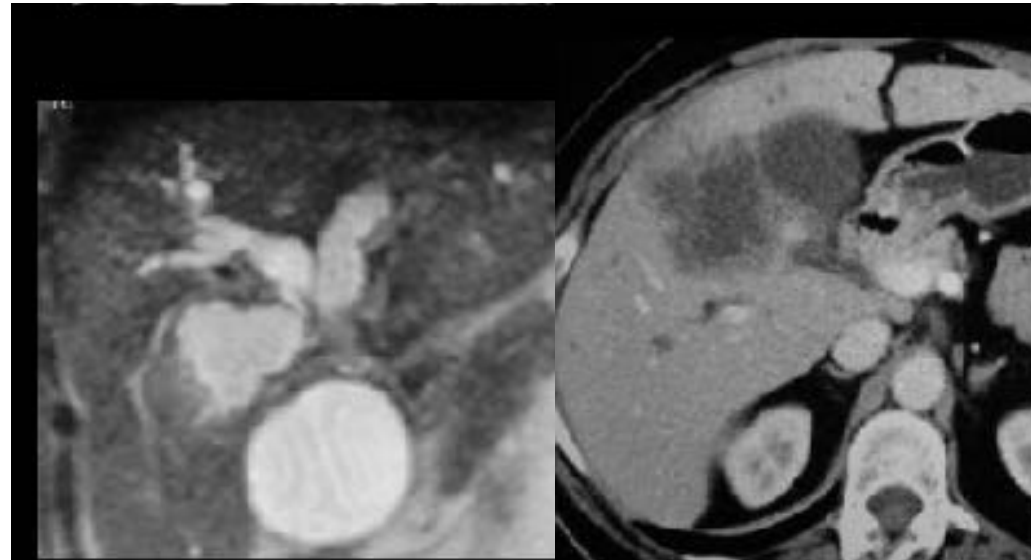
Infiltrativo



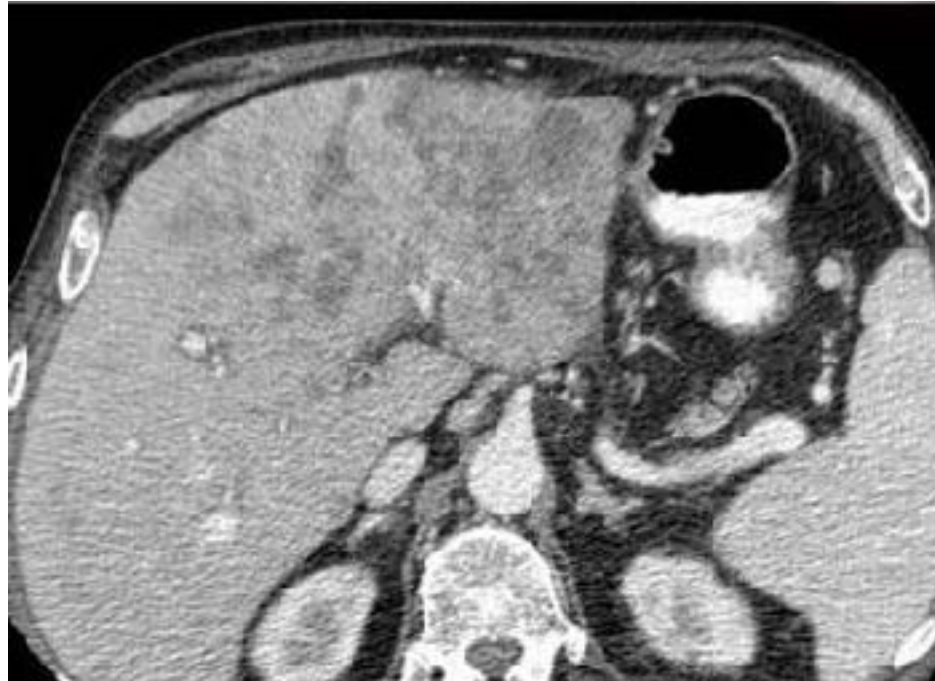
Polipoideo



Mixto



Metástasis hepáticas



¿RM o TC?

- **Experiencia del radiólogo**
- **Preferencias personales**
- **Tecnología disponible**

Perspectivas

- **ColangioRM con contrastes biliares (*gadoxetato disódico*)**
- **ColangioRM isotrópica 3D (múltiples antenas)**
- **ColangioTC con contrastes biliares**
- **TC con proyecciones de mínima intensidad**



***Sala de RM
acDI Hospital de Dénia***